

RECTOR'S MANAGEMENT REPORT

For the period 6 March to 21 May 2021



1

- Dankie voorsitter. You will find my Management Report on pp. 18 of the Council bundle; *ook in die Afrikaanse bundel op bl. 18*
- As usual, I take it as read, but let me share some highlights with you.
- Again the report is structured according to our six core strategic themes.
- This presentation doesn't follow the report chronologically. I'll only point out certain aspects from the report, and also update you on other important developments since we submitted the report.
- Let's start with COVID-19 ...



<https://sacmcepidemicexplorer.co.za/>

Epidemic Explorer - Open Access

The SACMC Epidemic Explorer is a dashboard built by the South African COVID-19 Modelling Consortium (SACMC) to explore the COVID-19 epidemic in South Africa, analysing resurgence risk, presenting metrics to prepare for future outbreaks, and monitoring COVID-19 hospital admissions.

Click on the Resurgence Analysis tab to begin

This open access dashboard presents a subset of the metrics used to support the planning efforts of the government of South Africa. The public can use it to assess the COVID-19 risk level in any district and sub-district in the country. This dashboard is best viewed on a computer. If viewing on a mobile device, zoom in to

If you are experiencing low internet connectivity or would like access to the downloadable report, please click the button below for the most recent version (it may take a few minutes):

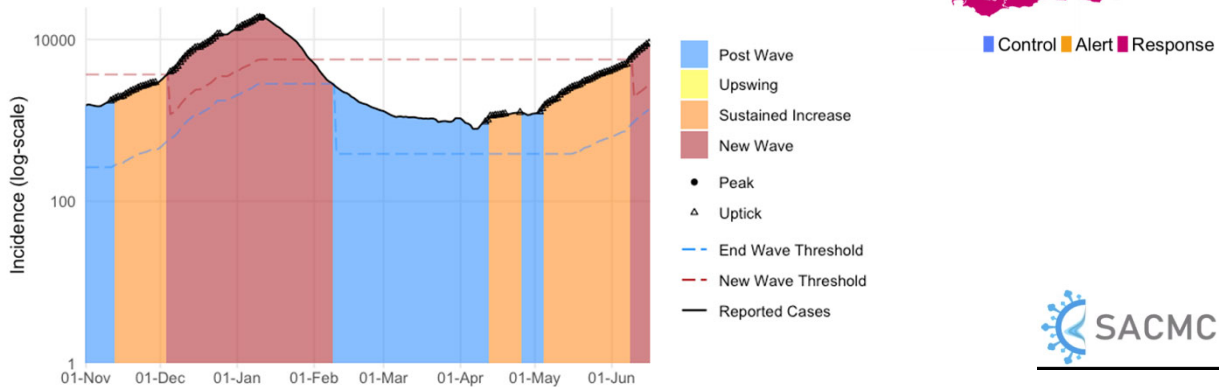
Download report



© SACMC Epidemic Explorer by the South African COVID-19 Modelling Consortium is licensed under CC BY-ND 4.0

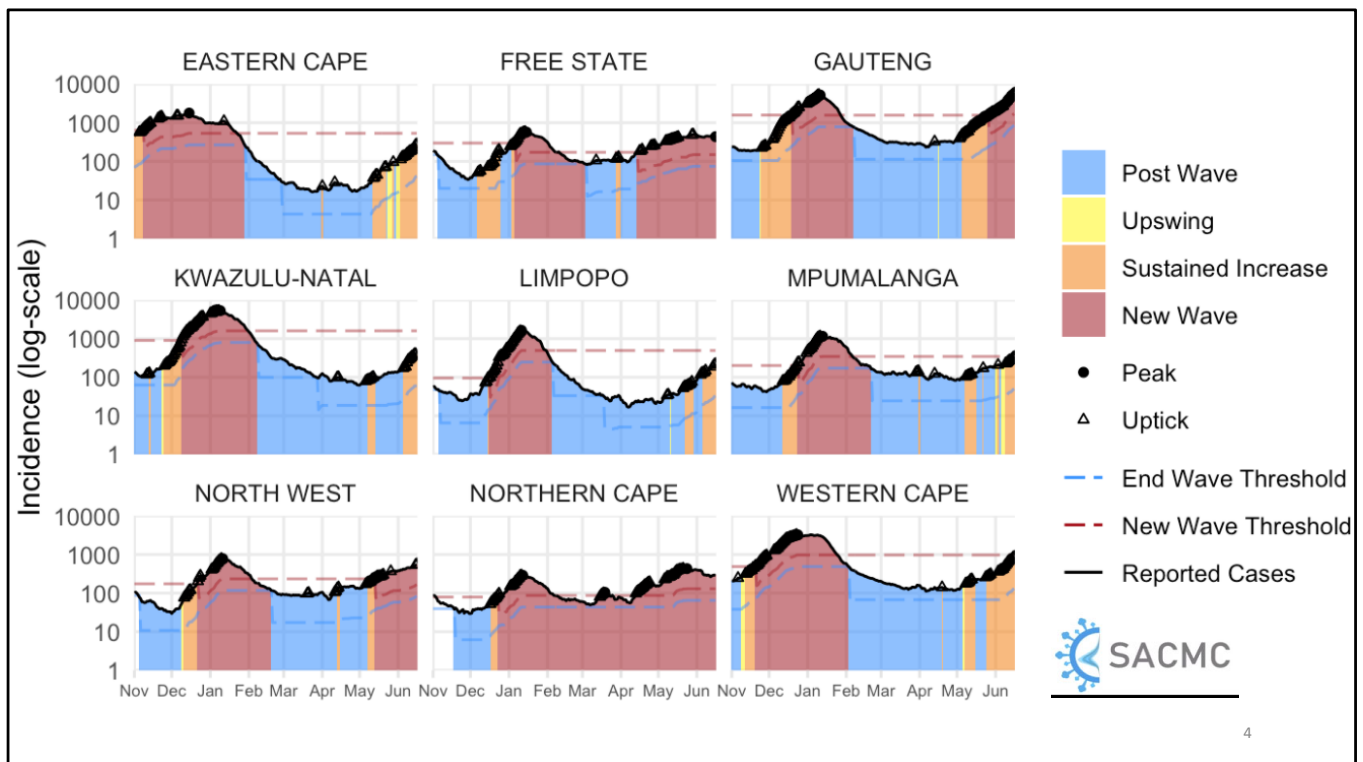
- A strong warning to remain on the alert against the threat of COVID-19 has been conveyed to us by Prof Juliet Pulliam, Director of SACEMA (the DSI-NRF Centre of Excellence in Epidemiological Modelling and Analysis), hosted at Stellenbosch University (SU).
- She has been making presentations at meetings of our Institutional Committee for Business Continuity (ICBC) lately.
- These slides that I am sharing are screenshots taken from the SA COVID-19 Modelling Consortium's website
- You will find a link on our dedicated COVID-19 webpage on the University's website ... under "COVID-19 Infections"

South Africa

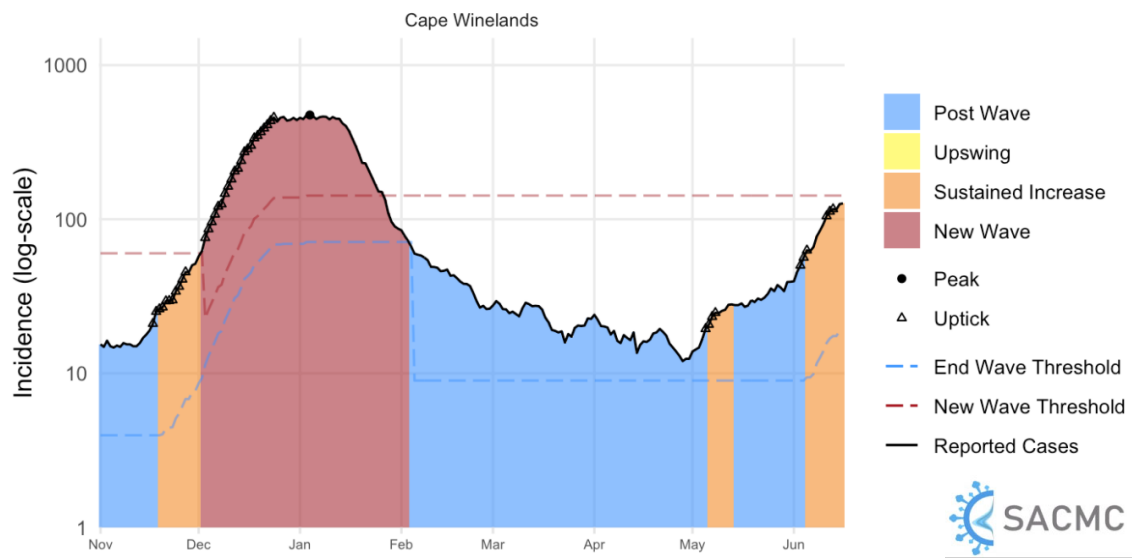


3

- As you know, since our previous meeting, South Africa was placed, first, on risk adjusted Level 2, and then, on Level 3.
- As you can see from the SA COVID-19 Modelling Consortium's data, the country is currently in its third wave of COVID infections, having crossed the threshold of 30% of the maximum incidence seen in the previous wave.

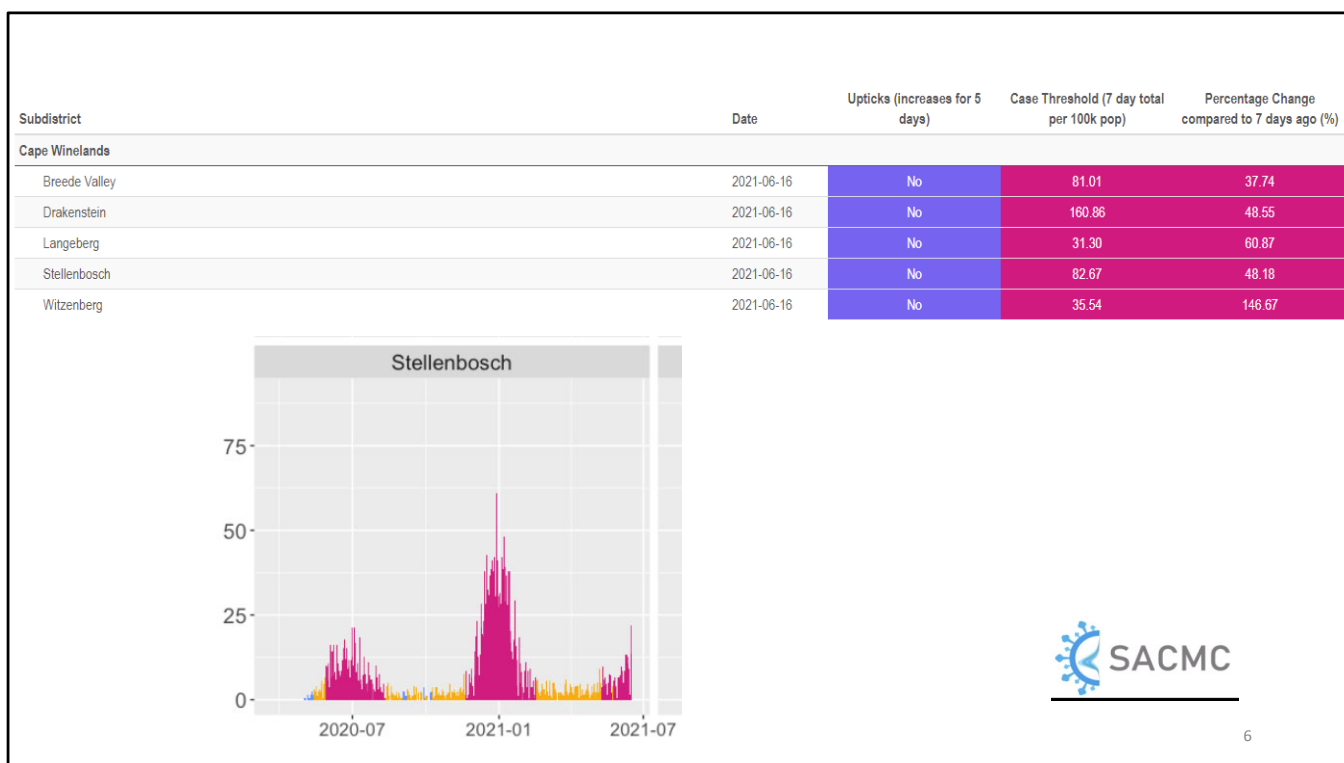


- Looking at the provincial breakdown, most provinces are already experiencing a third wave, or are fast heading there.



5

- Cape Winelands: Seeing a sustained increase



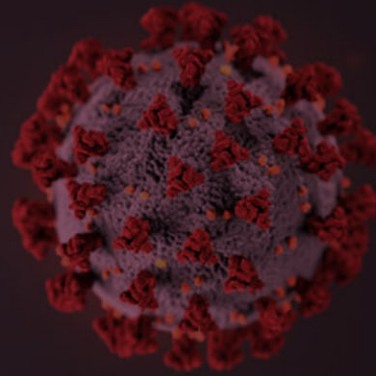
- Stellenbosch in the “high risk” category, with more than 83 weekly incidents per 100 000 of the population.
- That is why we consistently ask everyone to wear a mask, avoid crowded and poorly ventilated spaces, maintain a safe physical distance from others and wash their hands regularly.
- Also ...

The implications of COVID alert level 3 for SU



Switch to ERTLA; but A2 & A3 assessments to continue as planned

Feedback from the ICBC

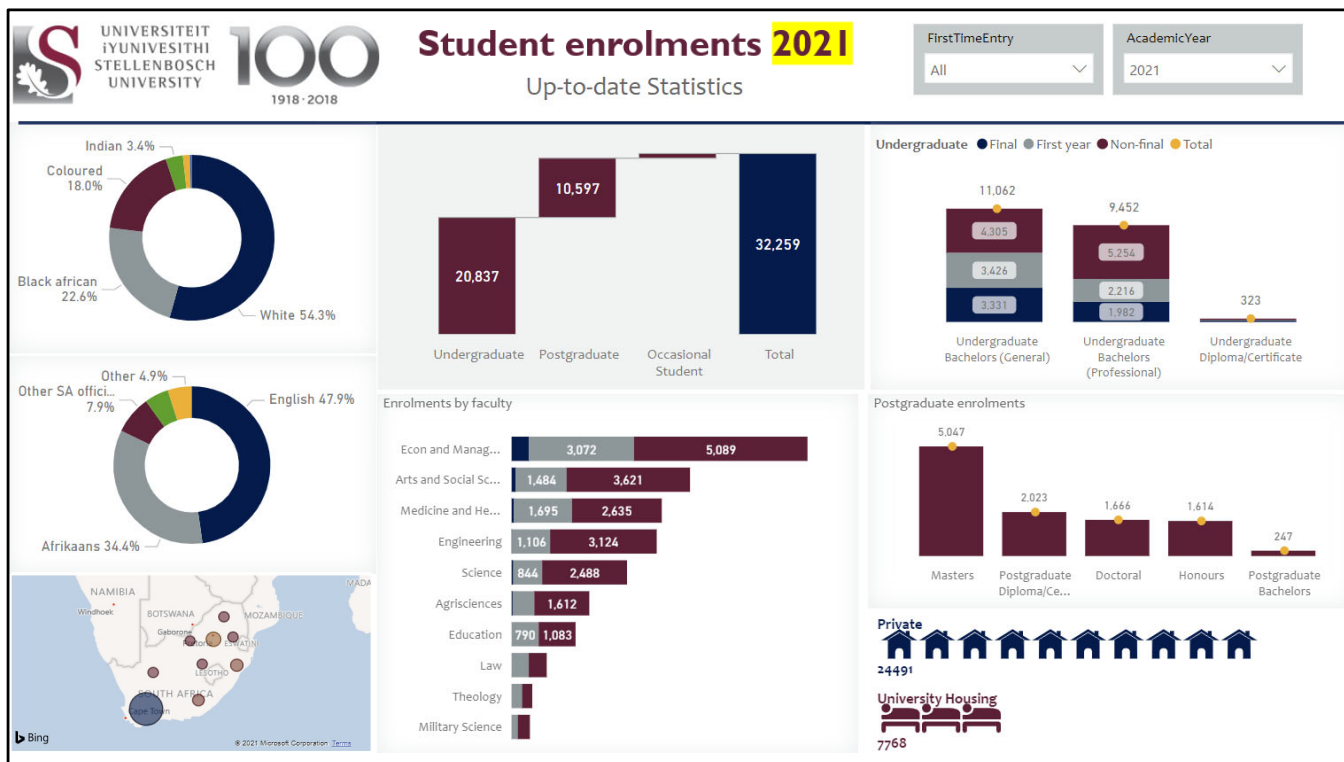


7

- The ICBC carefully considered the implications of Level 2 – and, more recently, Level 3 – for our approach to learning and teaching, including the upcoming assessment period.
- The first thing to note is that the HE sector as a whole is governed by directions on managing the 2021 academic year, gazetted by the DHET on 29 March.
- Because local circumstances vary, individual institutions are given considerable leeway to manage the pandemic.
- However, we all have the responsibility to ensure that students, staff and visitors to our campuses strictly comply with health protocols and social distancing measures.
- Based on input received from workstreams, the ICBC decided to continue with ARTLA for the remainder of the semester and the rest of the year.
- However, when there was a rise in COVID numbers with one week of classes to go, we switched to ERTLA
- We remain confident that we have the necessary arrangements and protocols in place to proceed safely with exams in sit-down mode, invigilated.
- So, A2 and A3 assessments are starting on our campuses today and will continue as planned until 24 July.
- Students will not be granted access to a venue unless they wear a mask, and they will be asked to leave if they take it off during the exam.
- And they could be excluded from sit-down assessments if they display significant COVID-related symptoms.
- Let's switch gear now. If students study hard and pass all their exams, they will graduate ... so let me share some good news with you ...



- It turns out we actually broke our own record for the most qualifications ever awarded in an academic year. The latest figures show that the University conferred **9 236** degrees, certificates and diplomas in 2020 – up from the previous record of 9 133 set in 2019.
- How so? Well, many final-year master's and doctoral students who were on a trajectory to graduate in December 2020 or March 2021 could not complete the research component of their programmes in time.
- The research workstream proposed in 2020 that these candidates be offered an additional, extended submission date of 1 March 2021.
- This meant that an additional 105 master's and 31 doctoral degrees could be awarded.
- The additional qualifications take SU's tally for master's and doctoral degrees for the 2020 academic year to 1 316 and 302 respectively, and the overall number of qualifications conferred to 9 236. Of these, 4 771 were at undergraduate and 4 465 at postgraduate level.
- These achievements speak volumes for SU's ability to be agile in the face of adversity, as well as for the can-do attitude of our staff and students
- Now, moving from 2020 to 2021 ...



- Let's look at enrolments – up to date figures show we have **32 259** students, slightly up from last year, which is a vote of confidence in the University.
- Again, this slide is a screenshot of information on the University's website – on the page of the Division of Information Governance
- Here we see various metrics ... enrolment by population group, by home language, etc.
- We also see enrolment by faculty, and the undergraduate/postgraduate split
- Overall postgraduate enrolment statistics are up 3% over the past two years, which is good.
- Let's now look ahead at next year ...



- Starting with recruitment. Our first online Open Day was held on 17 April.
- It attracted almost 24 000 prospective students, parents and teachers – more than double the number of visitors who attended recent face-to-face Open Day events.
- It reached audiences across the globe, with participants hailing from Namibia, Zimbabwe, Botswana, Nigeria, the US, the Netherlands, the UK, Germany and France.



- The Open Day Webpage will remain active until the end of July.
- Just over 1 800 Open Day attendees completed a survey after the Open Day.
- 90,1% said they were satisfied with the information they got.
- And 99,3% of survey takers, including those who aren't in Grade 12 at the moment, said they were going to apply to SU.

SU reaches out to schools Die US reik uit na skole



A TRANSFORMATIVE STUDENT
EXPERIENCE



12

- Still on recruitment – in person this time, not virtual ...
- In the first two weeks of May, the Centre for Student Recruitment and Career Advice and I visited **Bloemfontein, Kimberley, Oudtshoorn and George**, where we hosted a group of school principals, each along with two members of their representative council of learners
- The guests were from both strategically identified feeder schools and new-market schools.
- The learners were very enthusiastic and were all very eager to come to Stellenbosch

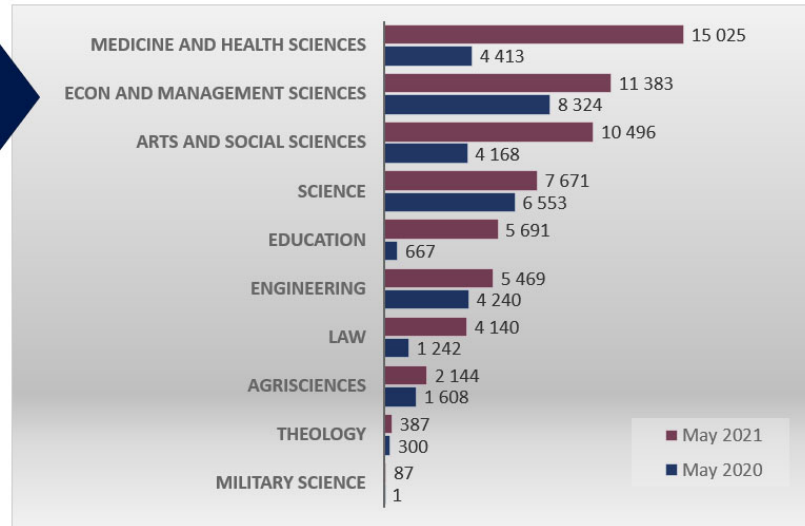
Completed undergraduate programme applications for 2022

Total programme applications:

May 2021: 25 511

May 2020: 11 806

- Applicants can apply for a maximum of three programmes
- Significant increases in faculties where only first choice programme applications were accepted in the past (e.g. Medicine, Education and Law)
- Applicants not required to upload contract before submitting their completed application (as in the past)



- Applications for next year opened on 6 April, on the new SUNStudent system.
- And they're up, as you can see here.
- Although it is important to note these figures show the number of applications for programmes, not individual prospective students.
- I have been referring to a vote of confidence in SU – in my view, this surge in appeal is a direct result of the agility and resilience we displayed in 2020, our swift move to ERTLA, and the successful completion of the 2020 academic year.

Support for ERTLA and ARTLA



A TRANSFORMATIVE STUDENT
EXPERIENCE



NETWORKED AND COLLABORATIVE TEACHING
AND LEARNING



14

- An important part of the high level of student success achieved at SU in 2020 was the extensive support programme rolled out behind the scenes. This not only enabled the initial rapid switch to online learning and teaching, but also sustained the new approach for the rest of the academic year.
- With financial support from the **Michael & Susan Dell Foundation**, the **Oppenheimer Memorial Trust** and the **Harry Crossley Foundation**, we were able to expand our capacity to develop additional multimedia educational material and offer its students more virtual academic tutoring, mentoring, psychosocial support and technical assistance.
 - Additional tutoring was offered to 22 534 students, and a special short course was developed to improve tutors' skills.
 - Die Taalsentrum het meer as 1 250 podsending-vertalings gedoen om Engelse leermateriaal in Afrikaans te omskep.
 - The Language Centre also hosted academic skills webinars, produced writing skills videos, provided online reading and writing support, as well as real-time interpreting for deaf students.
- The funders also graciously granted the University a no-cost extension to 30 June 2021 to spend the remaining funding. This allows faculties to continue funding additional tutorial activities

Networked and collaborative teaching and learning

FGGW kry splinternuwe Simulasie- en Kliniese Vaardighede-eenheid (SKVE)



A TRANSFORMATIVE STUDENT
EXPERIENCE

Ultramodern simulation
unit advances health
sciences training at SU



15

- Faculties are forging ahead with various teaching and learning
- A state-of-the-art new Simulation and Clinical Skills Unit has been opened at on our Tygerberg Campus.
- The unit boasts among others hi-tech medical models as well as a simulated hospital ward and consultation rooms.
- The ultramodern facility is aimed at supporting and training world-class healthcare practitioners. A clinical setting depicting a possible life and death situation.
- The simulation and clinical skills unit allow for students to hone their skills in a safe environment.
- I was at the opening and it provides students with exciting new learning opportunities.

SU School for Climate Studies



SOUTH AFRICA

Varsity establishes new School for Climate Studies in a battle to fight climate change

28 April 2021 - 19:52



Yoliswa Sobuwa
JOURNALIST



SAnews.gov.za
South African Government News Agency

HOME NEWS FEATURES MULTIMEDIA GALLERIES OPINIONS SPECIAL FEATURES

Stellenbosch University school for climate studies to open in June

Thursday, April 29, 2021

Higher Education, Science and Innovation Minister Dr Blade Nzimande, has welcomed the establishment of a new School of Climate Studies at Stellenbosch University, which will be officially launched in June later this year.

Nzimande said the establishment of an academic school focusing on climate change is a potentially promising step to enable the country's academics and students to build a well-rounded body of scientific knowledge and skills to enable, not only a better understanding of the problems, but also sustainable responses to various new challenges facing humanity.

FOR SUBSCRIBERS 26 Apr



Stellenbosch University to launch SA's first school for climate change studies

fin24 Penelope Mashego

SHARE



16

- Another exiting development – our new School for Climate Studies will launch soon.
- The vision of the School is to be a world-class institution for interdisciplinary and transdisciplinary climate and related studies in and for Africa, and to support and encourage research partnerships with other entities, both nationally and internationally.
- It has a broad mandate to work across all faculties, centres and institutes at SU, as well as with other national and international higher education institutions and public and private enterprises.
- I look forward to seeing the impact it will have.

AUDA-NEPAD CoE of STI



OPINION

Excellence in science, technology and innovation for Africa

25 MAY 2021 - 09:40 by WIM DE VILLIERS

Listen to this article

0:00 / 5:06 1X

BusinessDay



17

- Another exiting development, the AUDA-NEPAD Centre of Excellence in Science, Technology and Innovation.
- Honoured that we have been chosen as co-host along with the CSIR
- One of five Centres of Excellence of the African Union Development Agency (AUDA) and the New Partnership for Africa's Development (NEPAD)
- Te others being climate resilience (based in Cairo, Egypt), rural resources and food systems (in Dakar, Senegal), human capital and institutions (in Nairobi, Kenya), supply chain and logistics (to be established in a Central African country),
- The Centre here in Stellenbosch will implement home-grown solutions for real-world change across Africa – work is already underway on more than 40 innovations that have been selected for upscaling.
- Developments like this bode well for the future of SU, our country and our continent – proud to do our bit.

Navorsing vir impak

NIDS-CRAM results show that the effects of the pandemic are far-reaching and ongoing.



RESEARCH FOR IMPACT

Vaccines, food security and learning losses highlighted in latest COVID study



18

- Researchers from ReSEP (Research on Socioeconomic Policy) in the Department of Economics at Stellenbosch University (SU) contributed significantly to Wave 4 of the National Income Dynamics Study Coronavirus Rapid Mobile Survey (NIDS-CRAM) that was released recently. They helped to produce 11 Working Papers that capture the findings of data collected for this wave of NIDS-CRAM which is a broadly nationally representative survey of the impacts of the COVID-19 pandemic on South Africans.

South Africa's 1980s debt crisis and the path to democracy – details of secret negotiations revealed

By Rebecca Pitt • 9 May 2021

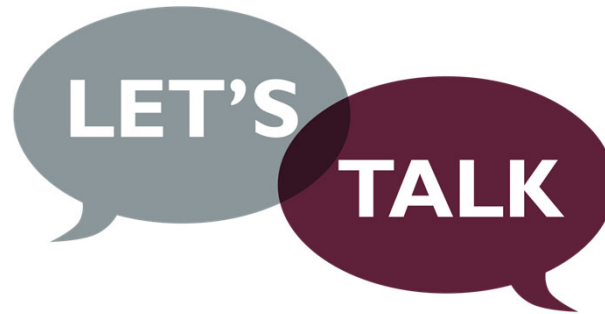


© The South African Debt Crisis 1985/86 collection was donated to Stellenbosch University in 2020 and was opened on 7 May. The collection ...



- From last month we're also housing a collection of documents that sheds light on details of negotiations between banks and political leaders, previously kept secret.
- These documents contain information that led to a resolution of the 1985/86 South African debt crisis and helped pave the way to democracy.
- The collection will enrich research efforts in South African history, economic history, sociology, politics and government as it will shed light on the factors that led to the power shift in the country.
- It was donated by Sir Claude Hanks. The collection comprises Hanks' personal working papers resulting from secret negotiations held with banks, that ensued with Dr Fritz Leutwiler, the former director of the Swiss National Bank as an independent mediator, after several banks refused to deal directly with South Africa in light of its political turmoil

Thank you / Dankie / Enkosi



- Council members, the vast scope of the operational activities covered in my Management Report reflects the commitment of the entire Team Stellenbosch to deliver on the key objectives contained in our Strategic Framework, notwithstanding the debilitating effects of the coronavirus pandemic.
- It is clear evidence that we remain on course, agile and resilient to deal with whatever challenges and volatility the third wave may hold.
- I will now take **comments and questions**